

2022 Cub Scout Day Camp Leader & Parent Guide

Contents

Day Camp Introduction	3
Dates of Operation & Arrival Times	4
Parent-to-Child Ratio	4
Program – What Will They Be Doing?	5
Approximate Daily Schedule:	5
Safety in Light of COVID-19	6
Where is Camp Located?	8
Driving to the Day Camp Drop Off Area	9
Drop Off & Pick Up	10
Volunteer Parking	10
Pick Up Slips	11
Late Arrival & Early Departure	12
Camp Layout	12
First Aid Station	13
Medications	13
Two Deep Leadership & Buddy System	13
Dress Code	14
What to Bring to Camp	15
Lost and Found	17
Pets	17
Discipline	17
Damage to Equipment or Facilities	18
<u>Water Activity</u>	<u>18</u>
Junior Helpers	19
Adult Leader & General Camp Information	20
2022 Camp Unit Assignments	24
2022 Camp Unit Leaders	28
2022 Junior Staff	29
Pick Up Slips	30
MERIDIAN CUB SCOUT DAY CAMP – ADULT VOLUNTEER DAY PARKING PASS	31



Day Camp Introduction

We're excited that you can join us at this year's Meridian District Cub Scout Day Camp.

Day Camp takes place June 13th through June 17th at Little Hills Ranch, located at 18013 Bollinger Canyon Road in San Ramon, California.

Camp is open to all Boys and Girls (Cub Scouts) entering the 1st – 5th Grade. If your child is not currently a Scout, he or she can attend camp by filling out a BSA Youth membership application and paying the prorated BSA registration fee. At the end of camp, we would encourage you to join a local Cub Scout pack or troop.

You'll discover and learn things from across the farm. An amazing fun filled week is planned where Cub Scouts will play and participate in:

- Valuable Cub Scout Skills/Crafts
- Archery
- Nature
- Scout Skills
- Science/Culture Experience
- Water Activities
- Wood projects
- Make new friends
- Meet Scout BSA youth from different troops

Contacts:

Rand Mahoney
Meridian District Executive
rand.mahoney@scouting.org
925.899.3840

Ashley Turner & Cassie dela Cruz
Day Camp Directors (volunteers)
meridiandaycamp@bsameridian.com

Eleen Hsu
Day Camp Program Director (volunteer)
meridiandaycamp@bsameridian.com



The Meridian District Cub Scout Day camp is nationally accredited. The camp annually undergoes a rigid inspection based on the National Camping Standards of the Boy Scouts of America.

Visit the **Meridian Day Camp website** for up-to-date information and forms: <https://meridian.ggacbsa.org/day-camp>

Dates of Operation & Arrival Times

Campers

Monday - Thursday

Drop Off: 8:30 - 8:45 a.m. (PLEASE DO NOT DROP OFF CAMPERS BEFORE 8:30)

Camp Program: 8:50 a.m. - 4:00 p.m.

Pick Up: 4:00 - 4:15 p.m. (PLEASE DO NOT ARRIVE BEFORE 3:50)

Friday

Drop Off: 8:30 - 8:45 a.m. (PLEASE DO NOT DROP OFF CAMPERS BEFORE 8:30)

Camp Program: 8:50 a.m. - 2:30 p.m.

Pick Up: 2:30 - 2:35 p.m.

Adult Volunteers & Junior Helpers:

Monday – Friday: 7:45 a.m. to 4:30 p.m.

Those who signed up for set-up or specific volunteer positions should consult the following Sign-Up Genius links to determine time slot of volunteer position.

Day camp [activity stations](#) or [other volunteer opportunities](#).

Who Should Attend?

This summer camp experience is open to any Cub Scouts going into 1st through 5th grade.

Parent-to-Child Ratio

Each Pack is required to provide a minimum of 1 adult per 6 children at camp, with at least 2 adults to meet the requirement of two-deep leadership. Tigers (children entering the first grade in 2022) are required to have an adult partner with them each day at camp. If your group does not have 2 adults, contact the director and your group will be partnered with another group for the week.

Program – What Will They Be Doing?

Cub Scout Day Camp provides a structured program for the youth who attend. Scouts in attendance will be assigned a unit, with which they will rotate through all the activities. Each group will get the opportunity to take part in Archery, Crafts, Cooking, Scout Skills, Nature, Water Play, and much more. Program sessions run approximately 30 - 45 minutes.

The primary focus for Day Camp is creating great opportunities for the scouts to have fun. While we may be accomplishing some scout rank advancement achievements, that is not our primary goal. Currently we do not have a list of what might be done at camp since we lack the volunteer help to compile the list. It would be best to contact your scout's unit leader to see what is done each day.

Approximate Daily Schedule:

Monday-Thursday

8:30 - 8:45 AM	Drop Off. Arrive at Camp.
8:50-9:15 AM	Opening Assembly
9:20-10:05 AM	Station Rotations
10:10-10:55 AM	Station Rotations
11:00-11:45 AM	Station Rotations
11:50-12:10 PM	Lunch
12:15-12:55 PM	Lunch Time Assembly
1:00-1:45 PM	Station Rotations
1:50-2:35 PM	Station Rotations
2:40-3:25 PM	Station Rotations
3:30-3:50 PM	Closing Assembly
3:50-3:55 PM	Walk to Parking Lot
4:00-4:15 PM	Pick up. Leave Camp.

Friday

8:30-8:45 AM	Drop Off. Arrive at Camp.
8:50-9:15 AM	Opening Assembly
9:20-9:45 AM	Field Games
9:50-10:15 AM	Field Games
10:20-10:45 AM	Field Games
10:50-11:15 AM	Field Games
11:20-11:50 AM	Lunch & Rehearse Skits
11:55-12:35 AM	Lunch Time Show
12:40-1:00 PM	Ice Cream
1:05-1:35 PM	Skits
1:40-1:50 PM	Pick Up Bags
1:55-2:15 PM	Closing Assembly
2:20 PM	Pick up. Leave Camp.

***Note Junior Helpers are invited to an activity & pizza party held Thursday night from 4:20 – 6:00 p.m.**

Safety in Light of COVID-19

The safety of all participants is our priority. With COVID-19, we are taking additional precautions at camp on top of our established health and safety measures. These precautions are important, but they do not remove the potential for exposure to COVID-19 or any other illness while at camp or anywhere else.

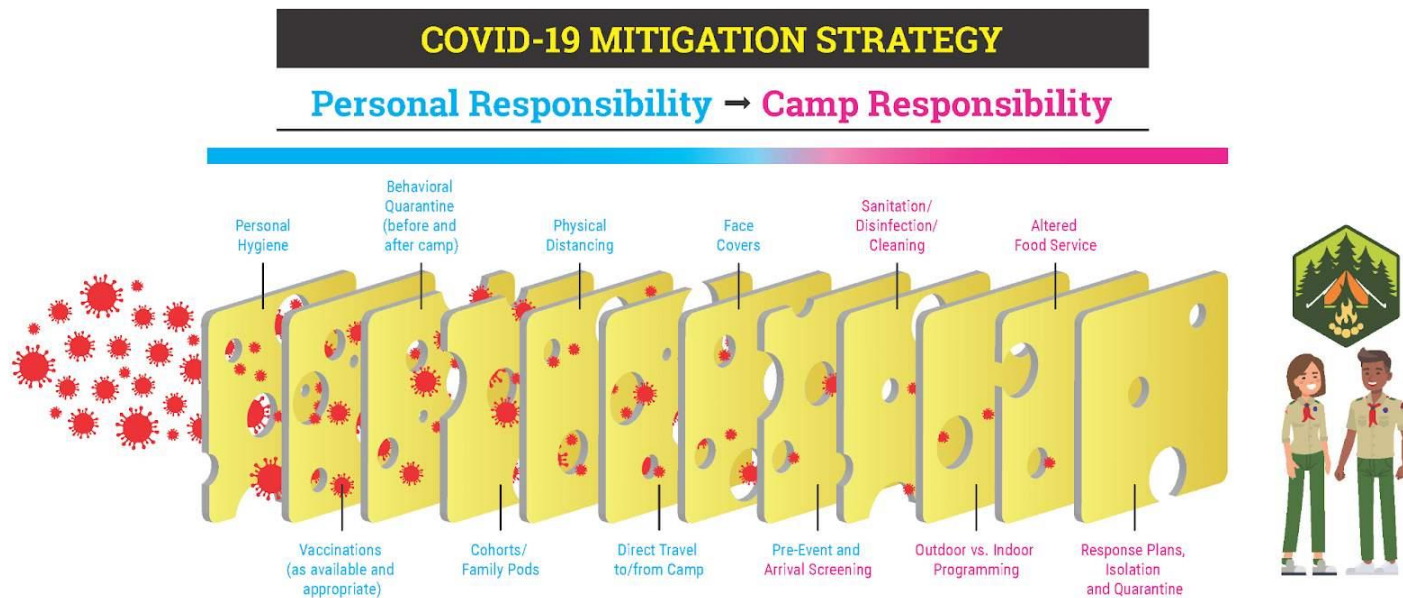
Information from the Centers for Disease Control and Prevention (CDC) shows that some people with COVID-19 may show no signs or symptoms of illness but can still spread the virus. Since some people may be contagious before their symptoms occur it is possible that an infected person may pass all the required health screenings and be allowed into a camp.

Organization into Camp Units

County and State guidelines are ever changing, so we will adapt accordingly to comply with the CDC rules in place. Our current plan is to have campers of one gender placed in a small “unit” that is led by two adults and/or with the assistance of junior helpers (which in turn are Scouts BSA scouts). These units cycle through events or stations throughout the day/week. Sometimes multiple units simultaneously participated in the same event.

In light of COVID, campers cannot be mixed or rotated in and out of units. Once they are assigned to a unit, they must stay with this unit the entire time at camp.

While we will not intermingle units, there will be occasions where more than one unit may be at an Activity Station at the same time. Little Hills Ranch is a large outdoor facility that has large banquet canopies which will be utilized for Crafts and Engineering. Other events take place in the open. When more than one unit is at a station at the same time, they will be kept apart – with one unit on one side of a tent and the other(s) on the other side or in the middle.



Mitigating the risks of COVID is a shared responsibility.

Everyone must do their part before, during and after camp:

Before Camp

All Day Camp participants eligible for the COVID-19 vaccine are encouraged to be vaccinated.

Refer to the [Golden Gate Area Council's COVID policy](#) for updated information.

(*per the CDC*) People with COVID-19 have had a wide range of symptoms reported – ranging from mild symptoms to severe illness. Symptoms may appear 2-14 days after exposure to the virus. Anyone can have mild to severe symptoms.

Do not participate if you have any of the following symptoms:

- ☐ Fever (100.4° F or greater)
- ☐ Cough
- ☐ Shortness of breath or difficulty breathing
- ☐ Fatigue
- ☐ Muscle or body aches
- ☐ Headache
- ☐ New loss of taste or smell
- ☐ Sore throat

Do not participate if you or anyone you live with has recently tested positive for COVID-19 or does not have test results back. Do not attend the event if you, anyone you live with or anyone you have recently been around feel unwell.

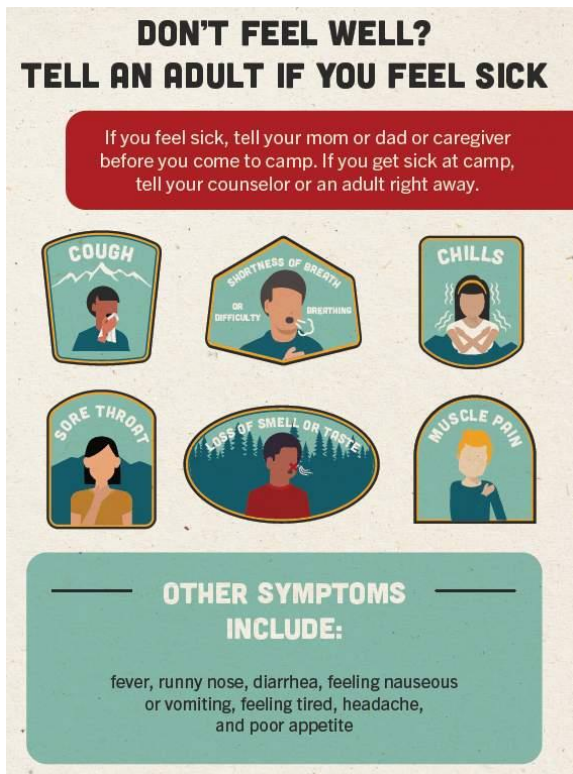
If you have a positive COVID-19 test, follow the CDC guidance for isolation and your personal health care provider's treatment recommendations.

CDC Guidance on COVID Quarantine and Isolation

<https://www.cdc.gov/coronavirus/2019-ncov/your-health/quarantine-isolation.html>

After Day Camp

Should any participant (Youth or Adult) or family member develop COVID during the week of day camp or within 10 days following camp, please email Rand Mahoney, the Meridian District Executive, at rand.mahoney@scouting.org as soon as possible after the diagnosis.



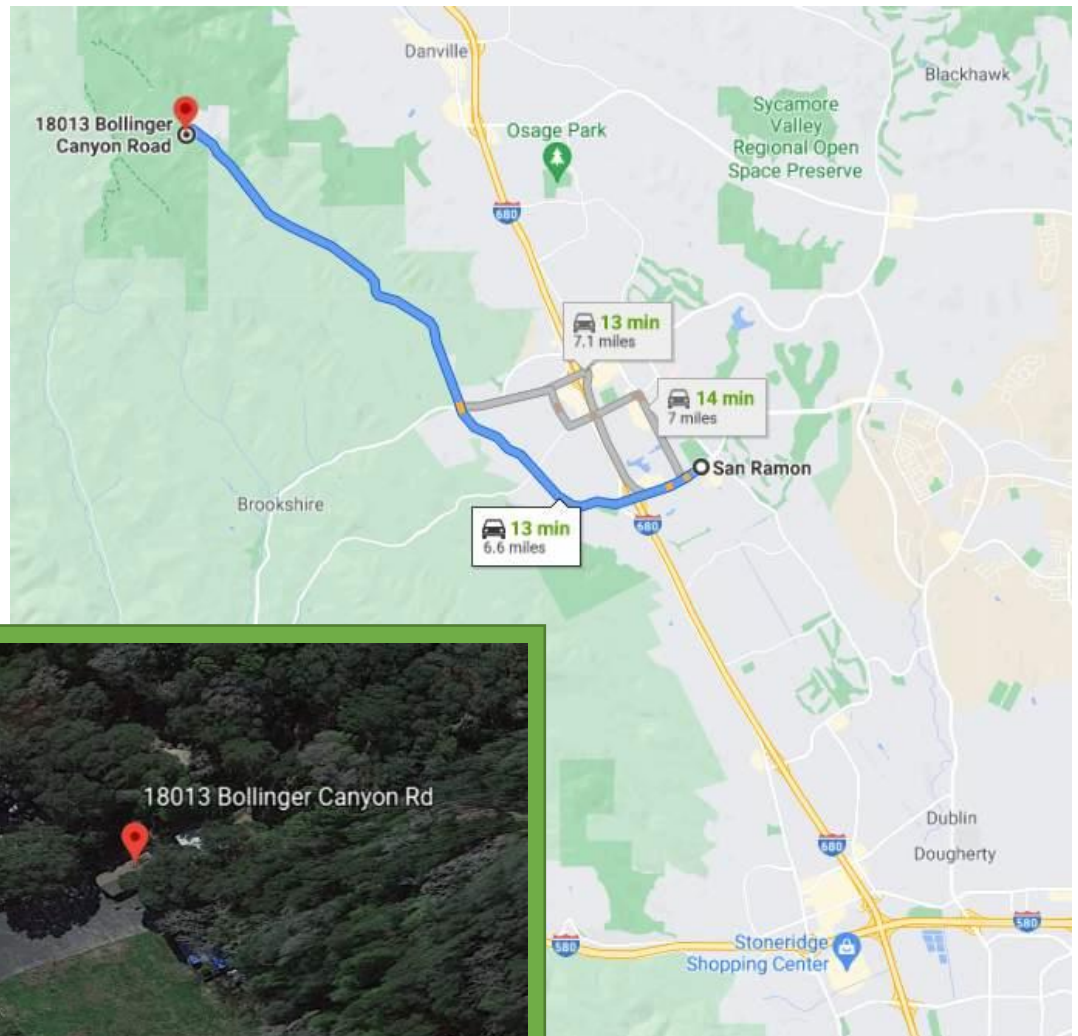
Where is Camp Located?

Little Hills Ranch

18013 Bollinger Canyon Road

San Ramon, California.

*Near Las Trampas Regional Park. Please follow the speed limit when driving Bollinger Canyon. There is lots of wildlife around! (Note: There is **NO CELL PHONE SERVICE** in Bollinger Canyon or at Little Hills)*



Driving to the Day Camp Drop Off Area

Traffic is very busy in the mornings, especially on Monday. Please plan to spend 15 minutes for drop-off and 30 minutes for pickup. **The most important things - Please have PATIENCE during drop off and pick up; and follow the volunteer directions! THANKS!**

All vehicles travel down Bollinger Canyon Road and **go past** Little Hills Ranch entrance.

- A U-turn is made further down the road so that all vehicles entering camp do so by making a right hand turn
- Do not stop on Bollinger Canyon Road to make a left hand turn into the parking lot. Go to the end and make the U-turn. There is NO LEFT TURN directly into the Little Hills parking lot.



	Pickup and Drop Off		Volunteer & Temp. Parking		Volunteer Parking
---	---------------------	---	------------------------------	---	----------------------

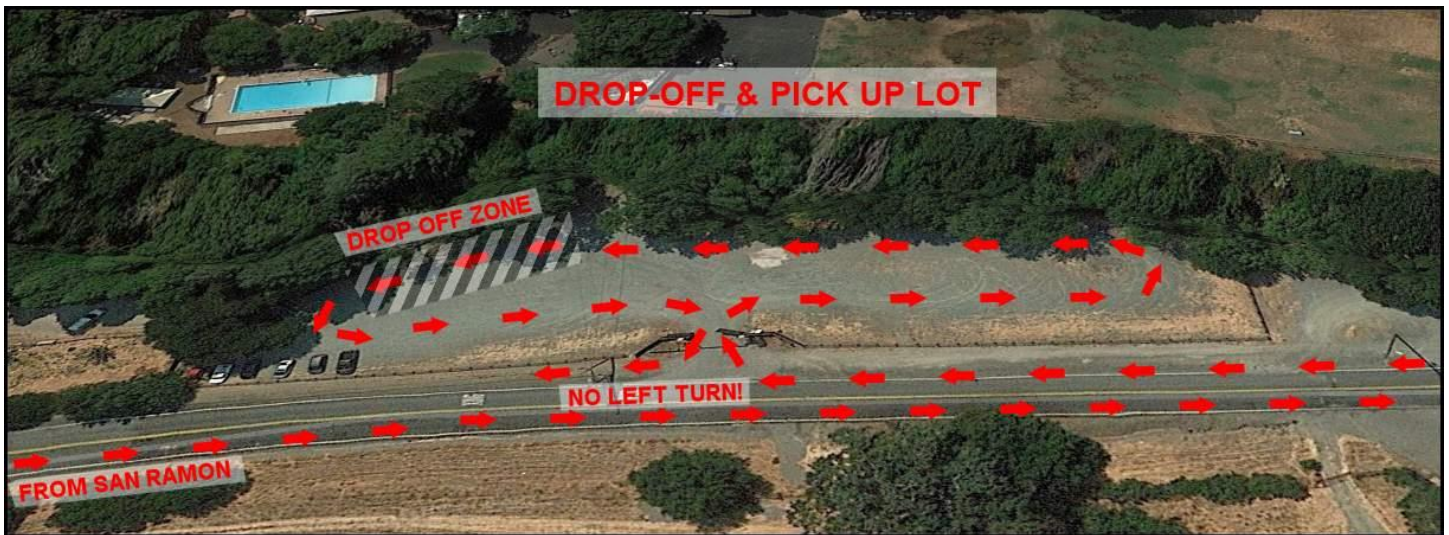
Drop Off & Pick Up

Cars will be directed when to enter the Drop Off & Pick Up Lot at Day Camp.

- Wait to turn into the parking lot and follow the directions given by the Traffic Personnel, only advancing when directed.

The flow of traffic is in a large counter-clockwise circle, with the Drop Off & Pick Up Zone located towards the end of the circuit.

- Please follow the directions given by the Traffic Personnel. **When picking up your campers, be sure to present your Pick-Up slip to the Attendant.** Wait until directed to drive off as many children are getting in / out of cars during this time.



Volunteer Parking

Only adults volunteering the day at camp and wearing their Camp Staff shirts will be allowed in the Main Parking area. Parents wanting to walk their scouts to the entrance in the morning will have to park in the overflow area. Make sure you **display your parking pass on your dashboard** so that we may find you in case your car needs to be moved.



All vehicles parked in the main parking lot need to be backed in. The front of the car needs to face out so a quick exit may be made in the event of an emergency.



Pick Up Slips

In order for a child to leave the camp property, a **Pick-Up Slip** needs to be turned in.

Given children may be in different camp units, the adult picking up must have a **Pick-Up Slip** for each child.

These pick-up slips must be filled out completely.

- One child per slip.
- Write their unit number on the slip. Children will be in their units during pick up time.
- Circle the day that the slip is good for.
- Give the SLIP(s) to the person picking up your child each day.
- We will compare the name on the **Pick-Up Slip** to that is on the driver's ID. They must match in order for the child to be released to the person picking them up.

Every adult, including parents and parent volunteers, picking up a child from camp **MUST** present a valid pick-up slip **EACH DAY**. You even need a SLIP for your own child. **One pick-up slip per scout** (Cub Scout or Jr. Helper).

Pick Up Slips are on the Day Camp website at: <https://meridian.ggacbsa.org/day-camp/>

Contact your camp directors for the password to open the PDF. The access to this document is protected for the safety of our scouts.

CIRCLE

BSA Golden Gate Area Council	
2022 Meridian Day Camp PICK UP SLIP	
PLEASE PRINT:	Camp Unit # _____
<u>Camper name:</u> _____	
The adult driver holding this SLIP (print name here) _____	
has permission to pick up my SCOUT from day camp	
Signature of Parent/Guardian: _____	
M	Tu W Th F Date _____
Driver will be asked to show a picture I.D. before camper is released.	

Late Arrival & Early Departure

LATE ARRIVAL

Parents, do your best to inform your Unit Leader (preferred) or Camp Directors of a late drop-off. This will prevent any unnecessary phone calls.

Park your car in the parking lot and walk your scout into camp. Check in at Headquarters (HQ). We will determine your camper's unit current location and will escort your camper to their Unit by a Jr. Helper or Staff.

EARLY DEPARTURE

Please inform us if you plan to remove your camper early.

Park your car in the parking lot and walk into camp to Headquarters (HQ), have your pick-up slip filled out with photo ID.

Your camper will be located and escorted to HQ (note: this may take 10-20 minutes)

NO EARLY CHECKOUT AFTER 3PM (Monday-Thursday)!

Camp Layout



First Aid Station

While camp is located within a short distance from Fire Station #38, the First Aid Station is onsite to provide simple care to Scouts. The First Aid Station is located on the immediate left-hand side as you enter camp, next to the pool area. A qualified Camp Health Officer will be assigned at the station every day.



Everyone at camp must have their Medical form Part A & B on-file to be allowed on-site. Any camper or volunteer injured at camp should report to the tent for evaluation. The camper's buddy, Junior Helper or adult should escort them to the tent. Injuries will be triaged and treated. For serious injuries, parents will be notified and EMS will be activated.

Medications

If a camper must take any kind of medicine (prescription or over the counter) while at Day Camp, this must be turned into the First Aid Station at the beginning of camp and picked up on Friday. On Monday morning, the Camp Health Officer will be available in the parking lot to receive all medications from the parent/adult when the scouts are dropped off. On Friday afternoon, the Camp Health Officer will be available in the parking lot to return all medication to the parent/adult. Medications will be kept under locked supervision. Don't bring medications to camp unless necessary.

Exception: Epi-pens and rescue inhalers will stay with the camper. Be sure your Scout unit leader knows where the Epi-pen is kept so the Camp Medic can easily find it. For Epi-pens, it is recommended to have a second one at the First Aid Station for a possible biphasic reaction.

For all medications:

- Written instructions must be included with the Scout's name, medication name, when to be administered, and what quantity (dosage) to be administered.
- All medications must be given to the Camp Health Officer in the **original pharmacy container** in a **one gallon zip lock bag** with the scout's name and pack number written on the bag.
- This must be annotated on the Medical A&B forms that was turned in during registration.
- Contact the Camp Directors before camp if any medication requires special refrigeration. All medications will be kept in a cool, locked container.

It is IMPORTANT that **the parent/unit leader keep track of the medications and times needed**. Many times, the Scout needs a reminder to go to the First Aid Station.

Over the Counter Medications

Please do not carry your or the camper's over-the-counter medications with you. Some over-the-counter medications are available at the First Aid Station and can be administered if you provided permission on the Medical B form.



Examples:

- Children's Advil, Motrin & Tylenol
- Adult: Motrin, Tylenol & Excedrin

If you must bring over the counter medication, please drop it off at the First Aid Station and remember to pick them up at the end of Camp.

Two Deep Leadership & Buddy System

Adults working directly with youth need to be registered with the Boy Scouts of America and have completed Youth Protection Training.

The camp strictly observes two deep leadership. Adults are never to be "one-on-one" with a Cub other than their own child. Always have another adult present. No Cub can go anywhere without another scout or "buddy".

Dress Code

Scouts, Junior Helpers & Adult Volunteers will receive a Day Camp shirt the first day of camp and are to wear their Day Camp shirt every day of camp. These shirts help us distinguish those who are allowed to be at camp from strangers.

- **Adults - gray**
- **Campers - red**
- **Jr. Helpers – red with golden bandana**
- **TAGs – red**

Cubs will have water play activities Monday – Thursday and are asked to wear their swimsuit under their clothes so that they can access the water activity faster (even if under shorts or jeans).

- Bring a towel and change of clothes so that your scout may change into dry clothes after the activity.
- Bring a Ziploc bag for the wet swimsuit.
- No open toed shoes are allowed.
- Please dress appropriately for all weather conditions.
- Wear sunscreen and hats at all times.

What to Bring to Camp

ITEM	Cub Cubs	TAGS	Jr. Helve rs	Camp Staff	Adult Volunte rs
Closed Toed Shoes	M	M	M	M	M
Face Coverings	O	O	O	O	O
Lunch	M	M	M	M	M
Snacks	R	R	R	O	O
Swimwear, Towels	O _s	O _s	O _s	X	X
Sun Block, Sun Glasses, Hats	R	R	R	R	R
Backpack	R	R	R	R	R
Weapons, Personal toys	⊘	⊘	⊘	⊘	⊘
Electronics, Money	⊘	⊘	⊘	O	O
Coolers / Ice Chests	X	X	X	X	R
Sun Shades	X	X	X	X	R

Legend:



Mandatory



Recommended



Optional



Only relevant if Aquatics Sports permission has been provided.



Not Relevant



STRICTLY PROHIBITED. Will be Confiscated.

What to Bring? - Details

Be sure that all items are labeled with a permanent marker with the scout's name and number.

ITEM	Participants
Water bottle!	<ul style="list-style-type: none"> Be sure to bring a water bottle to camp every day. Ice-cold water will be available to top off the water bottle throughout the day.
Face Coverings	<ul style="list-style-type: none"> As day camp is outdoors, face coverings are optional.
Snacks	<ul style="list-style-type: none"> Please provide enough snacks for your scout, TAG or Jr. Helper. They are very active at camp and easily get hungry before lunch time.
Lunch	<ul style="list-style-type: none"> Lunch is not provided. Everyone must bring their own lunch. No refrigeration is available at camp - any lunch bag should have their own cooling containers or packs should bring large ice chests/coolers to store individual lunch bags. Only food that will not spoil should be brought to camp. NO NUTS. Please do not bring any nut product / Peanut Butter to camp. Mayonnaise is not recommended.
Swimwear & Towels	<ul style="list-style-type: none"> Only Cubs, Tags and Jr. Helpers can participate in the water station activity. It is a good idea to wear the swimsuit under their clothes and then bring some undergarments/dry clothes to change into. Bring a Ziploc type bag for the wet swim suit. Adults do not swim.
Sunblock, Sun Glasses & Hats	<ul style="list-style-type: none"> It is strongly recommended that the scout have sun screen applied <u>before</u> coming to camp. Extra sunblock will be provided in the Unit Boxes and at the First Aid station, but personal sunblock is recommended. Hats are strongly recommended. Sunglasses are recommended.
Hand Sanitizer	<ul style="list-style-type: none"> Sanitizer will be located throughout camp and provided in the Unit Boxes. But personal sanitizer is recommended.

Closed Toed Shoes	<ul style="list-style-type: none"> • NO flip-flops, Crocs or sandals will be allowed at camp. • For the safety of the camper, only closed toed shoes are allowed. • Those that arrive a camp in improper shoes will be sent home.
Backpack	<ul style="list-style-type: none"> • Recommended to carry the above items.
Sun Shades	<ul style="list-style-type: none"> • We encourage Unit Leaders to bring Sun-Shades and set up over the Unit's table. Each Unit Leader should determine IF the shade from trees at the Unit Table is inadequate. Be sure to label everything.
Electronics Money	<ul style="list-style-type: none"> • Only adults are allowed to carry electronics and money on them. • Electronics found on other participants will be confiscated and held at headquarters till the end of the day. NOTE: There is NO cell phone service at camp.
Coolers / Ice Chests	<ul style="list-style-type: none"> • No refrigeration is available at camp - any lunch bag should have their own cooling containers or packs should bring large ice chests/coolers to store individual lunch bags. Unit leaders will typically have a cooler and ice or cooling block for the unit. • Ice chests can be left at Camp overnight.
Weapons Personal Toys	<ul style="list-style-type: none"> • Weapons of any kind (pocket knife, sling shot, razors, explosive, etc.) absolutely prohibited. The bearer will be asked to leave the camp • Personal toys will be confiscated and held at Headquarters until the end of the day. • We will provide all bows and arrows / shooting sports equipment needed for Day Camp. Personal equipment is not allowed.
Alcoholic Beverages & Illegal Drugs; Tobacco	<ul style="list-style-type: none"> • Alcoholic beverages or illegal drugs of any type will not be tolerated at ALL Day Camps. Possession of the same will result in immediate dismissal from the property. There will be no refund of unused camp fees. No tobacco or vaping devices are allowed in camp.

Lost and Found

The Day Camp lost and found box will be located at HQ (headquarters). Leaders need to remind Cubs to have their personal effects clearly marked with name and Pack number. Each Scout needs to take care of and safeguard their personal property. Do not take valuables to the program areas, or leave them lying unattended around camp.

Please have Cubs check to ensure they have all their belongings before going home – we will not be held responsible for items left at camp.



Pets

Pets are not permitted at Day Camp unless the pet is a registered Service Animal.

Discipline

The parents, Unit Leaders, and assistant leaders are the first responsible for the discipline and order of their own scouts. The Camp Staff may assist as needed, and will get involved with youth discipline if it involves the health and safety of Cubs, or the Unit Leaders or parents are not present at the time of the problem. The Camp Director will be appraised of any problem by the staff member and will refer them to the parent or the Unit leader. No arrangements may be made to send a Scout home before informing the Camp Director of the situation. No initiations or hazing are permitted in the BSA. It is so important the parents and the unit leader have a conversation BEFORE camp regarding any potential issues that may come up at camp and the best ways of working through them.

Damage to Equipment or Facilities

Each unit will be responsible for their own youth while at Day Camp. Any damages to equipment or facilities because of abuse, whether willful or as a result of negligent or imprudent practices, the parent of the Scout involved could be financially charged to cover the cost of those damages.

Water Activity

All Cubs need to be out of the water activity 10 minutes before the end of the scheduled time to allow for changing. All Cubs need to change out of their wet bathing suits.

Each Cub has been instructed to bring a zip lock bag with them to put the wet suit in. These bags should be in their daypacks that they carry with them throughout camp.

Youth can change inside the changing rooms adjacent to the water activity station. Youth must change on their own. Adults ARE NOT to assist the youth or be present while they are changing.

If a restroom is used for a changing station, male adults should not use the restroom when youth are inside changing. If it is necessary to enter the restroom, adults must be accompanied by another adult.

Activities are provided for those who wish not to participate in the water activity, such as lanyards or games.

Junior Helpers

Junior Helpers are our junior staff. In the morning, they should check in at the Junior Helper station located on the lawn in front of the pool area. There he or she will receive instructions. Junior Helpers will help out guiding campers in units, assisting at activity stations or ensuring that the water coolers are stocked.

Thursday Night Junior Helper Appreciation Event!

Junior Helpers are invited to a activity and pizza party – just for them – held Thursday evening from 4:20 p.m. to 6:00 p.m.

Volunteer Certificate and Earning Service Hours



At the conclusion of camp, Junior Helpers will also receive a THANK YOU certificate which states the hours they volunteered. This can be presented to their Scoutmaster or school, where applicable. Junior Helpers should contact their Troops before coming to camp to ensure that the hours they work at Day Camp will apply towards advancement service hours.

Adult Leader & General Camp Information

UNIT LEADER & GENERAL CAMP INFORMATION

Welcome to Day Camp! We hope you have a wonderful week. Here is some great information for you to have at camp. If you are a unit leader, we recommend you bring a wagon and pop-up canopies (make sure they are staked down). Don't forget to bring your backpack, water, snacks and lunch. There is little to no cell phone coverage at camp, so plan accordingly.

Unit Leaders should arrive by 7:45 a.m. Monday through Friday. Expect to leave around 4:30 pm. On Friday, camp ends at 2:30 p.m., but we ask that you stick around to assist us putting away camp items. We can get done in a few hours if everyone helps.

VOLUNTEER INFORMATION

CORE STAFF: The Core Staff consists of a Camp Director and Program Director, and the District Executive. This year they will be wearing **gray** T-shirts. Usually, the Core Staff can be located at the Camp Headquarters. The Core Staff are the ones who work year-round planning and organizing the camp. Once camp starts, they are there to help the Camp Staff run and operate the camp. All Core Staff will have 2-way radios. The District Executive is the only paid scouter involved in the camp. All other staff members are volunteers.

CORE STAFF ASSISTANTS: These are people who also have 2-way radios. They can be identified by their **gray** t-shirts. These people include the Medic and Stations Leads (Crafts, Swimming, Engineering, Cooking, Nature, etc.)

ADULT STAFF: The Camp Staff is made up of adults, who are working all week, have attended training, and orientation. Most staff members are Unit Leaders, Assistant Unit Leaders, or Activity Managers. The staff are the ones who run the camp during the week. It takes all the staff working together to have a successful camp. Staff members can be identified by their **gray** t-shirts.

UNIT LEADERS: These people are staff members assigned to manage a unit of scouts. They are responsible for supervising the Cubs in their Unit from the time camp begins until the Cubs are: a) picked up, b) turned over to the Camp Director, or c) are taken home. They make sure the Cubs arrive at each activity on time, do the activities in the Unit box with the Cubs, help the Cubs with the activities at each area, etc. Besides supervising the Cubs, they are responsible to make sure the Cubs have a fun and safe time at camp. Leaders are encouraged to get into the camp theme and have fun along with the Cubs.

ASSISTANT UNIT LEADERS: These people are additional staff members assigned to a Unit. Over the years we have found it better to designate only one Unit Leader per Unit, Staff members assigned to a Unit who are not designated as the Unit Leader are designated as an assistant Unit Leader.

ACTIVITY MANAGERS: These people are staff members who have been working on preparing projects for the camp and/or work in areas around camp running our activities (engineering, crafts, tags, sports, swimming, etc.). Special BSA training has been taken by the managers for archery and swimming.

UNIT AIDES: These are adults that come and work one or more days but less than all-week, or are all week adults who did not attend training. They are the second adult volunteer in the unit. They are at camp to help the staff run the camp, especially manage and supervise the Cubs or help the project managers. The Unit aides also are responsible for supervising the Cubs in the assembly area while the staff is attending the morning staff meeting.

Jr. HELPERS: These are youth (boys and girls) ages 11 to 17 who come to camp to work and assist the camp staff. They are

assigned to work in the TAG program, in activity areas, sometimes with Units to help the Unit Leaders, or assigned to do miscellaneous jobs around camp, such as keeping the water containers full. These aides are Scout BSA scouts (formerly Boy Scouts). Ask them to talk to our campers about the Scout program. Youth aides can be identified by their **red** shirts and **golden bandanas**.

STAFF BREAKS: Staff members can take a break whenever the Cubs are involved in an activity and are being supervised by the Unit aides and project leaders. The best time is when the Cubs are at the water activity. Be sure that the aides also get a break. When taking a break, be sure to inform your adult volunteer partner(s).

STAFF MEETING: There will be a brief staff meeting daily during the morning assembly. The meeting will be at Headquarters (HQ). One of the two leaders from each unit should plan to attend. This is a time to update you on any changes that may occur, solve any problems, and hear suggestions. Please be on time and come with your ideas and feel free to have your say. Be sure and let the core staff know of any problems or concerns you have right away. We can't address them if we don't know about them! Remember to have Unit Aides or the Assistant Unit Leader stay with the scouts during the staff meeting.

TAG-A-LONGS (aka "Tags"): This is a program designed for siblings of our campers while their parents are working at camp. This program is for parents working at camp only. Tags can be identified by their **red** t-shirts. Tags must be checked into the program upon their arrival and must remain in the program until departure, except in case of emergency.

UNITS: Cubs are divided into Units. Most Units are a mixture of Cubs from various packs. A Unit consists of approximately **12-14 Cubs**, and a minimum of **2 adults**. Some units will be a mix of two or more packs. Cubs wear **red** t-shirts.

UNIT BINDER: This is the guide for the Unit. It contains the attendance sheets, the daily Unit schedule, projects the Cubs will do at camp, rules, emergency information, and other important and useful information. The Unit leader picks the binder during the Morning brief. **THE UNIT BINDER IS LEFT INSIDE THE UNIT BOX AT THE END OF EACH DAY.**

UNIT BOX: These boxes contain projects that can be done during Unit time, the Unit binder, supplies, etc. Feel free to use it for storage of items you may need during the week, but be sure and take any personal belongings with you on Friday.

- **THE UNIT BOXES ARE TO BE LEFT AT CAMP AT THE END OF EACH DAY.** The boxes are to be put on the table outside the TAG area when leaving. They are to be picked up at the truck when you arrive each day.

UNIT FLAG: Each Unit will find their flag when they arrive at assembly on Monday morning. Units are to sit behind their flag while at assemblies. When at assembly, the flags are to be placed on their unit flag stand. When the morning assembly is over, the flag is carried by the Cubs and goes everywhere they go during the day. Each Cub should be given a turn carrying the flag. When the closing assembly is over, return the flag to the flag stand. These flags are to be decorated by the Scouts during the Monday unit time activity (this takes place in the Unit area (at your picnic table), NOT IN THE ASSEMBLY AREA). Supplies to decorate the flags are in the Unit box. Let the Cubs use their imagination. Have fun!

UNIT SCHEDULE: Each Unit is scheduled into various activities throughout the day. It is important for you to be on time for these activities to finish on time. Please keep on schedule. If you finish early use some of the additional activities in your Unit box or play a game or sing a song.

ASSEMBLY: We have three assemblies during the day. Note: It is the Leaders responsibility to keep the Cubs orderly and quiet when needed.

Morning assembly is for getting started and general announcements. After morning assembly your Unit is dismissed to begin your day at camp.

Lunch assembly is for an activity or presentation. Have your Unit assemble quickly, to avoid delays in the afternoon activities. On Monday there will be a camp evacuation drill. DO NOT tell the campers in advance. If camp needs to be evacuated, an air horn will be blown at least two times in 3 short bursts. When this occurs, IMMEDIATELY round up all Cubs in your Unit and go to the parking area and line up behind the barricade with your Unit number on it. Do not attempt to collect belongings, etc. However, make sure you have your list of scouts in your unit and you can account for all of them. Activity managers are to be the last ones to leave their area, making sure all Cubs have left and all hazards have been secured.

Closing assembly is to say goodbye to the campers for the day and is usually pretty short. Be sure that your Unit area is clean and tidy and that all the Cubs in the Unit come with all their belongings to the assembly. Once assembly is over, you need to get the Cubs to the parking lot without delay.

REMEMBER YOU ARE RESPONSIBLE FOR THE CUBS IN YOUR UNIT UNTIL THEY ARE PICKED UP (OR TURNED OVER TO THE CAMP DIRECTOR IF THEIR PARENT HAS NOT ARRIVED AT THE PICK-UP TIME).

ATTENDANCE SHEET: This is found in your Unit Binder. Take attendance each day at morning assembly. Keep one copy in the binder and track which Cubs have attended each day for the achievements mentioned above. Keep one copy with you always in case of emergency and the camp needs to be evacuated. Another copy needs to be completed and will be delivered to the Camp Director or assistant during the morning assembly.

BUDDY SYSTEM: The name is descriptive. No Cub can go anywhere without another scout or "buddy".

TWO DEEP LEADERSHIP: Adults are never to be "one-on-one" with a Cub other than their own child. Always have another adult present.

BULLETIN BOARD: Special messages and a copy of the master schedule will be posted on the board. The board is in the HQ area.

CLEAN UP: We are all responsible to keep the entire camp clean. Keep your Unit area clean. Trash cans are located throughout camp. Put all your Unit supplies away in your Unit box at the end of the day. Each Unit will have an opportunity to win a clean camp award. As the Cub Scout motto says, "Do Your Best". Activity managers are responsible for returning all tools to the storage truck at the end of each day.

FOOD & DRINK: Everyone attending Camp, both Cubs and adults, is responsible to bring their own food and drink. Water will be provided throughout camp. Only food that will not spoil should be brought to camp. Mayonnaise is not recommended. We do recommend one large ice chest, preferably with wheels, be brought to store the food and drinks in during the day. Please bring your own Ice or cooling blocks. Ice chests can be left at Camp overnight. We do have an emergency supply of water bottles at HQ if someone needs it.

LOST & FOUND: All lost & found items will be deposited at the Camp HQ. Please bring anything you find there. Expensive items will be held up at assemblies to be claimed, and if not, kept in the HQ. When camp is over, all items are delivered to the Council office.

SONGS: We highly encourage singing songs, chants, or cheers when going from place to place. The louder and more the better. You should start working on this as soon as Monday's assembly ends while traveling between activities. When coming up with your song, remember this year's theme. There is a bag full of candy that makes its way around Camp. The bag is referred to as "critter". Whenever a loud song is performed for the person with Critter, the Cubs will be rewarded! Also, we would love to have a copy of your song or cheer for our camp song & cheers book. Find songs online

and bring your own to camp!!!

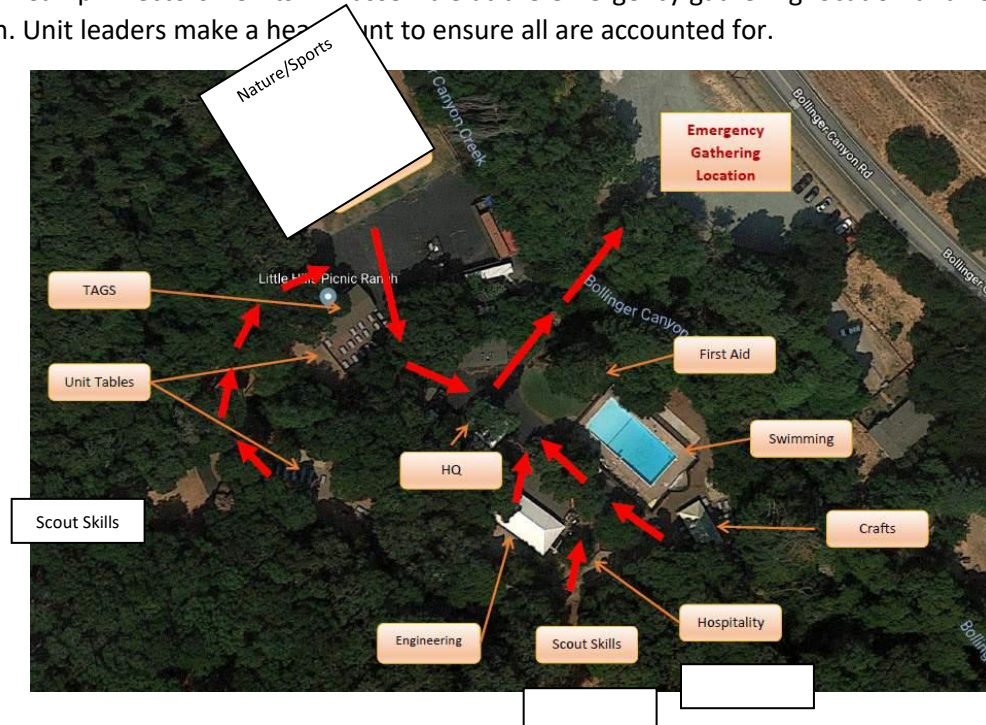
WATER ACTIVITY: The Cubs will be supervised by the staff member assigned to the water activity. They will be assisted as needed by the Unit Leaders and aides. All Cubs need to be out of the water activity 10 minutes before the end of the scheduled time to allow for changing. All Cubs need to change out of their wet bathing suits. Each Cub has been instructed to bring a zip lock bag with them to put the wet suit in. These bags should be in their daypacks that they carry with them throughout camp. The Cubs can change either inside the changing rooms adjacent to the water activity station. The Cubs must change on their own. Adults ARE NOT to assist the Cubs or be present while they are changing. Male adults should not use the restroom during the period that the Cubs are inside changing. If necessary to enter the restroom, adults must be accompanied by another adult.

MEDICAL CONCERNS: On each attendance sheet is a box next to each scout's name that lists any medical concerns that the Unit Leader may need to be aware of. Due to the small size of the box, most problems are noted with only one or two words. For additional information, the Cub's application is available for review in the Staff Area. If any problem noted on the forms are observed, report them to the nurse. An example of this is if the form says, "bee sting", then the Cub is allergic to bee stings. If stung, the Camp Health Officer or Camp Director must be notified immediately.

FIRST AID: Any & all injuries must be reported to the Camp Health Officer (CHO). The CHO can usually be found in the First Aid area. Whenever they leave, a note will be on a board outside the first aid area as to where they can be located. They also can be found by contacting any staff member with a radio. Any children who need medication while at camp MUST have it administered by the CHO or by the child's parent. If sending a Cub to the CHO, remember to send a buddy. And if you think the Cub will have to stay with the CHO, send along two buddies with the sick or injured Cub. For any serious injury, contact the nearest staff member with a radio. The medic will come to the injured Cub Scout (or adult).

STRANGERS IN CAMP: If you see anyone in camp who looks like they do not belong, please notify immediately a staff member with a radio. The Camp Director will make contact and identify the stranger.

EMERGENCY EVACUATION – 3 short blasts from the air horn. Each station leader will have an air horn & 2-way radios to communicate with Camp Directors. Units will assemble at the emergency gathering location and remain there until the "all Clear" is given. Unit leaders make a head count to ensure all are accounted for.



JUNIOR HELPER PARTY: Thursday evening, Jr. Staff will be treated to pizzas and a party from 4:20 to 6:00 pm.

FRIDAY CAMP GAMES: Friday is when we will switch from the normal daily schedule to the camp wide games. We encourage help to setup stations. The Staff meeting will be held during opening assembly.

REMEMBER TO HAVE FUN AND THANK YOU FOR TAKING THE TIME TO COME AND WORK AT CAMP!

2022 Camp Unit Assignments

Note the camp unit numbers as this is the unit your child will be in during camp. Sorted by last name.

You need to use this number on your PICK-UP SLIP.

Last Name	First Name	Camp Unit	Pack	Registrant Type	Gender
Abreu	Kyle	2	809	Cub Scout	Male
Agustin	Maya	13	1776	Cub Scout	Female
Agustin	Zoe	13	1776	Cub Scout	Female
Ahern	Connor	1	53	Cub Scout	Male
Ahern	Jensen	2	53	Cub Scout	Male
Ahern	Brennan		53	TAGS	Male
Altamirano	Joaquin	3	815	Cub Scout	Male
Amalraj	Rey	9	997	Cub Scout	Male
Amiji	Moiz	5	828	Cub Scout	Male
Arrieta	Liam	5	882	Cub Scout	Male
Aydelotte	Garrett	9	997	Cub Scout	Male
Aydelotte	Nolan		997	TAGS	Male
Barani	Pranav	4	841	Cub Scout	Male
Batista Gustafson	Mateus	2	814	Cub Scout	Male
Bhatnagar	Isheer	1		Cub Scout	Male
Boitano	Max	1	805	Cub Scout	Male
Boitano	Ruby	11	805	Cub Scout	Female
Buhagiar	Matthew	4	841	Cub Scout	Male
Chauhan	Siddharth	10	997	Cub Scout	Male
Chee	Matthew	10	997	Cub Scout	Male
Chen	Natalie	13	1776	Cub Scout	Female
Cheng	Zoe	11	828	Cub Scout	Female
Chi	Kaylee	11	828	Cub Scout	Female
CHILUKURI	ROHAAN	9	997	Cub Scout	Male
Chourasia	Maharth	8	1776	Cub Scout	Male
Copeland	Juliet	13	1776	Cub Scout	Female
datla	sahana	12	841	Cub Scout	Female
Davis	Joshua	6	828	Cub Scout	Male
dela Cruz	Max	8	1776	Cub Scout	Male
dela Cruz	Jett		1776	TAGS	Male
Delvecchio	Connor	1	805	Cub Scout	Male
Deshpande	Nyneisha	12	841	Cub Scout	Female

Devendra Kumar	Dhyanesh	2	814	Cub Scout	Male
Dikio	Ayden	4	841	Cub Scout	Male
Dimalanta	Sean	7	996	Cub Scout	Male
Dimalanta	Katy	13	996	Cub Scout	Female
Donnelly	Conor	7	800	Cub Scout	Male
Dreyfuss	Matthew	6	828	Cub Scout	Male
Dulin	Merritt	11	1	Cub Scout	Female
Dummett	Julian	4	841	Cub Scout	Male
Dunckel	Ethan	6	828	Cub Scout	Male
Faerber	Aaron	9	248	Cub Scout	Male
Garcia	Henry	2	814	Cub Scout	Male
Garcia	Liam	2	814	Cub Scout	Male
Garrett	Vincent	7	802	Cub Scout	Male
Gowreea	Ankush	1	805	Cub Scout	Male
Grage	Adam	2	814	Cub Scout	Male
Gunnarsson	Magnus	5	828	Cub Scout	Male
Gunnarsson	Axel		828	TAGS	Male
Gupta	Anubhav	13	30102 G	Cub Scout	Female
Hong	Caleb	5	882	Cub Scout	Male
Hopson	Cole	5	882	Cub Scout	Male
Huang	Brandon	1	205	Cub Scout	Male
Hurrey	Remi	12	882	Cub Scout	Female
Hutchison	Braddock	6	828	Cub Scout	Male
Ihara	Connor	2	809	Cub Scout	Male
Ihara	Emmett		809	TAGS	Male
Jeng	Aaron	7	996	Cub Scout	Male
Jeng	Ian	7	996	Cub Scout	Male
Kao	Kennedy	12	841	Cub Scout	Female
Kapadia	Zain	6	828	Cub Scout	Male
Kurniawan	Justin	10	997	Cub Scout	Male
Kuzmickas	Benjamin	10	997	Cub Scout	Male
Lee	Aiden	5	882	Cub Scout	Male
Lee	Audrey	12	882	Cub Scout	Female
Leung	Elliott	4	841	Cub Scout	Male
Levy	Evelyn	12	841	Cub Scout	Female
Lickiss	Leo	10	804	Cub Scout	Male
Lim	Esther	12	997	Cub Scout	Female
Lim	Elizabeth		997	TAGS	Female
Lin	Alexander	3	815	Cub Scout	Male
Liu	Travis	9	997	Cub Scout	Male
Lum	Colette	12	841	Cub Scout	Female
Luo	Mason	6	828	Cub Scout	Male
Ly	Alexander	10	997	Cub Scout	Male

Magna	Fiona	11	842	Cub Scout	Female
Mangalick	Nandini	11	828	Cub Scout	Female
Mapara	Arjun	6	995	Cub Scout	Male
Marglon	Chase	4	841	Cub Scout	Male
Marglon	Cole	4	841	Cub Scout	Male
Markey	Samuel	3	815	Cub Scout	Male
Markey	Abraham	3	815	Cub Scout	Male
Martin	Alexander	6	828	Cub Scout	Male
Martin	Cole	7	800	Cub Scout	Male
Michael	Alex	9	248	Cub Scout	Male
Mohey	Mira	11	842	Cub Scout	Female
Morimoto	Eduardo	7	800	Cub Scout	Male
Morrar	Ameer	4	841	Cub Scout	Male
Moss	Charles	3	815	Cub Scout	Male
Muthuraman	Vainav	8	1776	Cub Scout	Male
Nadimpalli	Aarush	2	814	Cub Scout	Male
Nadimpalli	Aneesh	2	814	Cub Scout	Male
Nair	Dhruv	2	814	Cub Scout	Male
Ng	Hubert	10	997	Cub Scout	Male
Nguyen	Lucas	3	815	Cub Scout	Male
Nichols	Sean	1	805	Cub Scout	Male
Nichols	Victoria	11	805	Cub Scout	Female
Noia	Emmett	1	805	Cub Scout	Male
Perona	Kai	2	809	Cub Scout	Male
Peterson	Ponleu	3	203	Cub Scout	Male
Peterson	Lukas	5	828	Cub Scout	Male
Peterson	Owen		828	TAGS	Male
Pham	Quan	9	997	Cub Scout	Male
Piskun	Daniel	9	813	Cub Scout	Male
Prasad	Avyan	7	996	Cub Scout	Male
Pretzlaf	Kora	11	248	Cub Scout	Female
Rai	Viaan	7	996	Cub Scout	Male
Rai	Vishruth		996	TAGS	Male
Raja	Shrihan	8	1776	Cub Scout	Male
Rajasekar	Kaarthik	6	995	Cub Scout	Male
Rajasekar	Pavithra	13	995	Cub Scout	Female
Raju	Neil	8	1776	Cub Scout	Male
Raju	Riya	13	1776	Cub Scout	Female
Rajvansh	Kashviera	13	996	Cub Scout	Female
Rao	Advay	9	997	Cub Scout	Male
Reed	Aiden	1	205	Cub Scout	Male
Renganathan	Ishaan	8	1776	Cub Scout	Male
Richards	Eli	3	815	Cub Scout	Male
Ridenour	Esme	13	996	Cub Scout	Female
Rodrigo	Savindu	5	882	Cub Scout	Male

Rosdahl	Raylan	1	805	Cub Scout	Male
Sahoo	Avyaan	8	1776	Cub Scout	Male
Saini	Krish	2		Cub Scout	Male
Sembrat	Declan	4	841	Cub Scout	Male
Seth	Samaira	12	841	Cub Scout	Female
Shafer	Pace	10	997	Cub Scout	Male
Shah	Kahan	5	828	Cub Scout	Male
Shah	Nevan	6	828	Cub Scout	Male
Shao	Huakai	6	689	Cub Scout	Male
Sharma	Kunal	10	997	Cub Scout	Male
Shimek	Eleanor	12	841	Cub Scout	Female
Singh	Dev	5	882	Cub Scout	Male
Singh	Adhrit	6	828	Cub Scout	Male
Sohail	Amira	13	814	Cub Scout	Female
Song	Matthew	10	997	Cub Scout	Male
Sreev	Aashritha	11	110	Cub Scout	Female
Steenbergen	Xander	4	842	Cub Scout	Male
Stefanus	Nicholas	7	996	Cub Scout	Male
Stefanus	Nolan	7	996	Cub Scout	Male
Sun	Zac	3	815	Cub Scout	Male
Talcott	Nathaniel	9	351	Cub Scout	Male
Tao	Jacob	8	1776	Cub Scout	Male
Teed	Logan	3	815	Cub Scout	Male
Turner	Cole	10	997	Cub Scout	Male
Turner	Graham		997	TAGS	Male
Vemula	Advithi	11	828	Cub Scout	Female
Weber	Everett	5	828	Cub Scout	Male
Weber	Scarlette	11	828	Cub Scout	Female
Wicke	Abigail	12	882	Cub Scout	Female
Williamson	Trevor	3	815	Cub Scout	Male
Witham	Brayden	1	205	Cub Scout	Male
Wu	Leran	4	841	Cub Scout	Male
XIONG	JAYDEN	8	1776	Cub Scout	Male
XIONG	JASMINE	13	1776	Cub Scout	Female
Xu	Howard	8	447	Cub Scout	Male
Xu	Harold		447	TAGS	Male
Yee	Colin	3	815	Cub Scout	Male
Yerur	Khush	8	1776	Cub Scout	Male
Zhao	Chenhao	4	841	Cub Scout	Male
Zhao	Jason	5	828	Cub Scout	Male

2022 Camp Unit Leaders

Camp Unit	# of Scouts	Type	Role	Monday	Tuesday	Wednesday	Thursday	Friday
1	11	M	Unit Leader	Michael Delvecchio	Michael Delvecchio	Michael Delvecchio	Michael Delvecchio	Michael Delvecchio
1	11	M	Unit Leader Assistant	Jonathan Witham	Jonathan Witham	Jonathan Witham	Jonathan Witham	Jonathan Witham
2	11	M	Unit Leader	Carl Gustafson	Courtney Ihara	Carl Gustafson	Carl Gustafson	Mick Hurrey
2	11	M	Unit Leader Assistant	Devendra Sriram	Devendra Sriram	Devendra Sriram	Devendra Sriram	Devendra Sriram
3	12	M	Unit Leader	Masami Richards	Masami Richards	Masami Richards	Masami Richards	Masami Richards
3	12	M	Unit Leader Assistant	Leslie Carballo	Leslie Carballo	Leslie Carballo	Leslie Carballo	Leslie Carballo
4	11	M	Unit Leader	Wouter Steenbergen	Wouter Steenbergen	Wouter Steenbergen	Wouter Steenbergen	Wouter Steenbergen
4	11	M	Unit Leader Assistant	Devyn Ahern	Devyn Ahern	David Copeland	David Copeland	John Dummett
5	15	M	Unit Leader	John Weber	John Weber	John Weber	John Weber	John Weber
5	15	M	Unit Leader Assistant	Sejal Sanghvi	Sejal Sanghvi	Sejal Sanghvi	Sejal Sanghvi	Sejal Sanghvi
6	11	M	Unit Leader	Jonathan Dunckel	Jonathan Dunckel	Jonathan Dunckel	Jonathan Dunckel	Jonathan Dunckel
6	11	M	Unit Leader Assistant	Ying Li	Ying Li	Ying Li	Ying Li	Ying Li
7	12	M	Unit Leader	Ana Henderson Morimoto	Ana Henderson Morimoto	Ana Henderson Morimoto	Ana Henderson Morimoto	Ana Henderson Morimoto
7	12	M	Unit Leader Assistant	Mark Dimalanta	Mark Dimalanta	Mark Dimalanta	Mark Dimalanta	Mark Dimalanta

8	11	M	Unit Leader	Dong Xu	Dong Xu	Dong Xu	Dong Xu	Dong Xu
8	11	M	Unit Leader Assistant	Jane Tao	Jane Tao	Jane Tao	Jane Tao	Jane Tao
9	11	M	Unit Leader	David Talcott	David Talcott	David Talcott	David Talcott	David Talcott
9	11	M	Unit Leader Assistant	Jeanna Aydelotte	Jeanna Aydelotte	Jeanna Aydelotte	Jeanna Aydelotte	Jeanna Aydelotte
10	11	M	Unit Leader	Sylvia Feng	Sylvia Feng	Sylvia Feng	Sylvia Feng	Sylvia Feng
10	11	M	Unit Leader Assistant	Sally Ng	Sally Ng	Sandy Pak	Sandy Pak	Sandy Pak
11	11	F	Unit Leader	Archana Barthure	Archana Barthure	Archana Barthure	Archana Barthure	Archana Barthure
11	11	F	Unit Leader Assistant	Maria Kapadia	Maria Kapadia	Maria Kapadia	Maria Kapadia	Maria Kapadia
12	12	F	Unit Leader	Daniel Levy	Daniel Levy	Belen Tang	Liesbeth Magna	Liesbeth Magna
12	12	F	Unit Leader Assistant	Marta Wicke	Tammy Davis	Kelley Peterson	Marta Wicke	Kelley Peterson
13	12	F	Unit Leader	Aparna Sivanandam	Aparna Sivanandam	Aparna Sivanandam	Aparna Sivanandam	Aparna Sivanandam
13	12	F	Unit Leader Assistant	Wendy Chan	Wendy Chan	Wendy Chan	Wendy Chan	Wendy Chan

2022 Junior Staff

Last Name	First Name	Troop	Registrant Type	Gender
Abreu	Kevin	1630	Junior Staff	Male
Chan	Caden	236	Junior Staff	Male
Chan	Colton	236	Junior Staff	Male
Chao	Haley	36	Junior Staff	Female
Chao	Chester	84	Junior Staff	Female
Cheng	Ian	1630	Junior Staff	Male
Clark	Ryan	236	Junior Staff	Male
Copeland	Ben	805	Junior Staff	Male
Hill	Simon	236	Junior Staff	Male
Ihara	Aedan	236	Junior Staff	Male
Kapadia	Adam	1630	Junior Staff	Male
Kurniawan	Angelina	36	Junior Staff	Female
Kurniawan	Alexander	1776	Junior Staff	Male
Kuzmickas	Jack	805	Junior Staff	Male
Le	Evan	1630	Junior Staff	Male
Luo	Maggie	828	Junior Staff	Female
Magna	Renzo	834	Junior Staff	Male
Mangalick	Nikunj	834	Junior Staff	Male
Ng	Clarence	805	Junior Staff	Male
Noriega III	Robert	236	Junior Staff	Male
Peterson	Aveah	236	Junior Staff	Male
Renganathan	Aditya	60	Junior Staff	Male
Savchenko	Daniel	810	Junior Staff	Male
Song	Jonathan	805	Junior Staff	Male
Turner	Emma	126	Junior Staff	Female

Wong	Haley	36	Junior Staff	Female
Wong	Connor	948	Junior Staff	Male

Pick Up Slips

Give a SLIP to the person picking up your child each day. ONE SLIP PER CHILD EACH DAY.

These pick up slips must be filled out completely. Every adult, including parents, picking up a child from camp MUST present a valid pick-up SLIP EACH DAY. Volunteers even need a SLIP for their own child.

Please get your **Pick Up Slips** on the Day Camp website.

<https://meridian.ggacbsa.org/wp-content/uploads/2022/06/2022-Meridian-Day-Camp-Pick-up-Slips.v1a-PROTECTED.pdf>

*Note: Be sure to get the password from the Camp Directors so you may open the document.
The access to this document is protected for the safety of our scouts.*

Fold and place this side up on dashboard.

MERIDIAN CUB SCOUT DAY CAMP – ADULT VOLUNTEER DAY PARKING PASS

Print Name: _____

Camp unit or Location: _____

Last Page